

QOLTEC MOUNT SHELF FOR RACK | 490 * 433

PRICE: --,-- EUR

SHIPPING TIME: 24 HOURS

CATALOG NUMBER: 54503

EAN CODE: 5901878545035

PRODUCENT: QOLTEC

NOŚNOŚĆ STATYCZNA: 20 KG

PASUJE DO SZAF RACK: 600 X 600 MM

ZASTOSOWANIE: SZAFY RACK W STANDARDZIE 19"

MATERIAŁ: STAL WALCOWANA NA ZIMNO SPCC

KOLOR: SZARY

WYMIARY (G/D X SZ X W): 425 X 485 X 30 MM

ZAWARTOŚĆ OPAKOWANIA: PÓŁKA STAŁA KARTA

GWARANCYJNA

GŁĘBOKOŚĆ / DŁUGOŚĆ OPAKOWANIA [MM]: 440

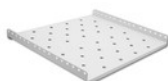
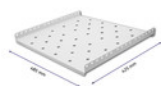
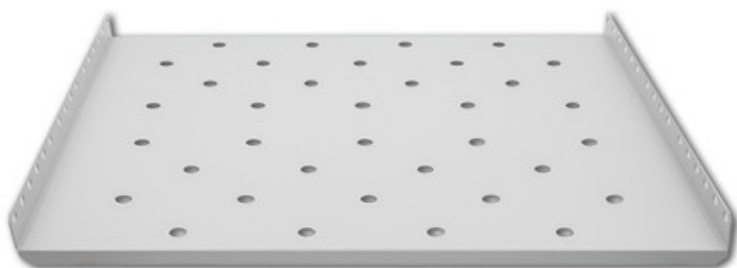
SZEROKOŚĆ OPAKOWANIA [MM]: 495

WYSOKOŚĆ OPAKOWANIA [MM]: 55

WAGA NETTO [KG]: 2.000

WAGA BRUTTO [KG]: 2.500

GWARANCJA: 24 MIESIĄCE



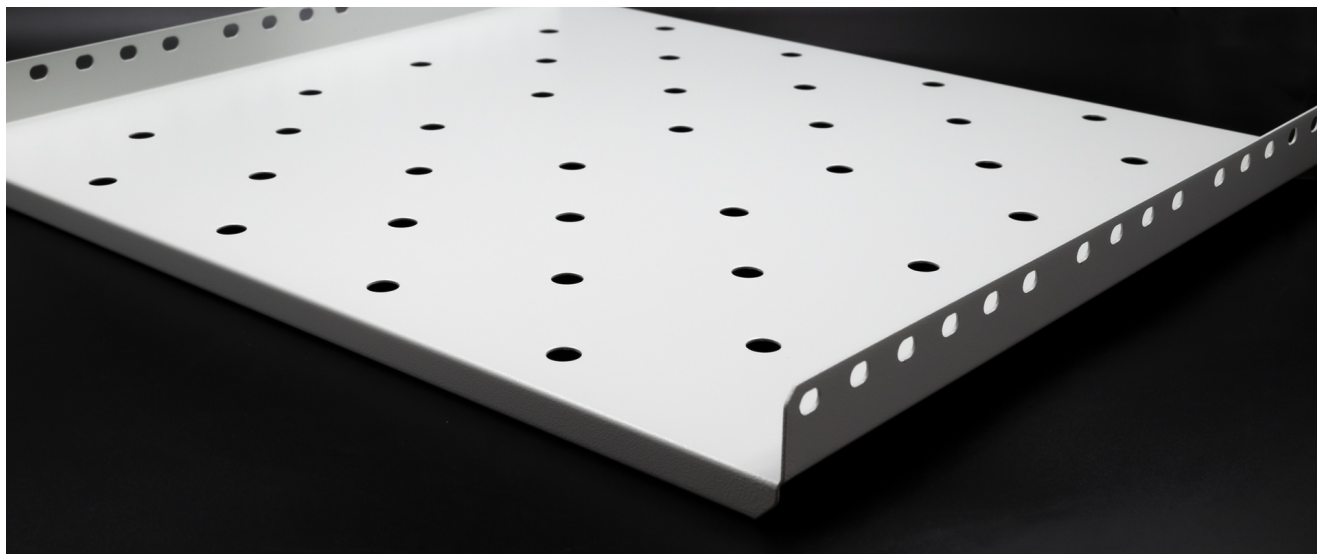
ITEM DESCRIPTION

PRECISION MANUFACTURING



THE RACK INSTALLATION SHELF IS MADE OF **HIGH-QUALITY COLD-ROLLED STEEL**. BECAUSE THE SHEET METAL IS PERFORATED, IT PROVIDES FRESH AIR TO THE UNIT AND ALLOWS THE HEATED ONE TO ESCAPE, REDUCING THE RISK OF FAULTS AND LOSS OF SYSTEM PERFORMANCE.

HIGH DURABILITY AND EASY INSTALLATION



THE PRESENTED MODEL IS DISTINGUISHED NOT ONLY BY ITS EXCEPTIONALLY SOLID WORKMANSHIP, BUT ALSO FEATURES RELIABLE DURABILITY. WITH AN EVEN DISTRIBUTION OF THE LOAD OVER THE ENTIRE SURFACE OF THE SHELF, ITS **LOAD CAPACITY IS AS HIGH AS 20 KG**. IT IS EQUIPPED WITH ARMS THAT ALLOW FIXING IN 4 POINTS IN THE RACK.

CONFIDENCE CONFIRMED BY A WARRANTY



DO YOU CARE ABOUT THE HIGH QUALITY OF THE PRODUCT YOU BUY? OUR SUGGESTIONS WILL MEET YOUR EXPECTATIONS. EACH OF THE SHELVES WE OFFER FOR RACKO'WYCH CABINETS IS COVERED BY A **24-MONTH WARRANTY** VALID FROM THE DATE OF PURCHASE.