



QOLTEC POWER ADAPTER FOR  
ACER 40W | 19V | 2.1A | 5.5\*1.7  
| +POWER CABLE

PRICE: --,-- EUR

SHIPPING TIME: 24 HOURS

CATALOG NUMBER: 52410

EAN CODE: 5901878524108

PRODUCENT: OOLTEC

PRZEZNACZENIE: ACER

MOC: 40W

NAPIĘCIE WEJŚCIOWE: 220 - 240 V

NAPIĘCIE WYJŚCIOWE: 19V

NATEŻENIE WYJŚCIOWE: 2.1A

WTYCZKA: 5.5 \* 1.7 MM

CZESTOTLIWOŚĆ: 50 - 60 HZ

ZASTOSOWANIE: LAPTOP

ZABEZPIECZENIA: - PRZECIWPRZEPięCIOWE - PRZECIW  
PRZECIĄŻENIOWE - PRZECIWWZWARTCIOWE - TERMICZNE

KONFIGURATOR: [NOTEBOOKSPAREPARTS.PL](http://NOTEBOOKSPAREPARTS.PL)

UWAGI: ZASILACZ SIECIOWY PRZEZNACZONY DO  
KONKRETNego MODELU LAPTOPA. ZASILACZ SIECIOWY  
AC/DC PRZEZNACZONY DO URZĄDZEŃ  
TELEKOMUNIKACYJNYCH I DO SPRZĘTU  
AUTOMATYCZNEGO PRZETWARZANIA DANYCH I  
URZĄDZEŃ DO TYCH MASZYN.

KOLOR: CZARNY

DŁUGOŚĆ KABLA: ~1.30M

WYMIARY (G/D X SZ X W): 105 X 45 X 30 MM

OPAKOWANIE: PUDEŁKO

ZAWARTOŚĆ OPAKOWANIA: - ZASILACZ SIECIOWY -  
KABEL ZASILAJĄCY - RZEP DO PORZĄDKOWANIA KABLA -  
KARTA GWARANCYJNA

GŁĘBOKOŚĆ / DŁUGOŚĆ OPAKOWANIA [MM]: 240

SZEROKOŚĆ OPAKOWANIA [MM]: 130

WYSOKOŚĆ OPAKOWANIA [MM]: 50

WAGA NETTO [KG]: 0.200

WAGA BRUTTO [KG]: 0.296

**GWARANCJA: 36 MIESIĘCY**

ITEM DESCRIPTION

## SOLUTION DEDICATED FOR YOU



RELIABILITY IS CRUCIAL FOR YOU? **CHOOSE A DEDICATED POWER ADAPTER FOR ACER 40W, 19V, 2.1A WITH A 5.5\*1.7 PLUG.** IT'S PERFECT FOR HOME OR OFFICE USE, SERVING AS YOUR PRIMARY OR BACKUP POWER SOURCE. WHETHER YOU NEED IT FOR WORK, STUDY, GAMING, OR TRAVEL, THE QOLTEC LAPTOP CHARGER ENSURES SMOOTH AND SAFE DEVICE OPERATION. IT'S CRAFTED FROM TOP-QUALITY MATERIALS, INCORPORATING **TECHNOLOGIES THAT PROMOTE LOW ENERGY CONSUMPTION AND HIGH EFFICIENCY.** THE PACKAGE INCLUDES THE CHARGER, A POWER CABLE, AND A CABLE ORGANIZER STRAP, ALLOWING YOU TO ADJUST THE CABLE LENGTH TO YOUR NEEDS.

### MATCHING THE ADAPTER - WE LEND A HELPING HAND



YOU CAN MINIMIZE DOWNTIME BY FOLLOWING A FEW SIMPLE RULES LISTED IN THIS PARAGRAPH.

#### REMEMBER!

YOU CAN FIND THE BASIC PARAMETERS ON **THE LABEL** LOCATED ON THE BOTTOM OF THE LAPTOP MARKED AS **INPUT** OR ON THE NAMEPLATE OF THE ORIGINAL ADAPTER DESCRIBED AS **OUTPUT**. THESE WILL BE: **POWER (W)**, **VOLTAGE (V)**, **CURRENT (A)**. THE FOLLOWING POINTS WILL DISPEL ANY DOUBTS THAT MAY ARISE WHEN SELECTING EQUIPMENT:

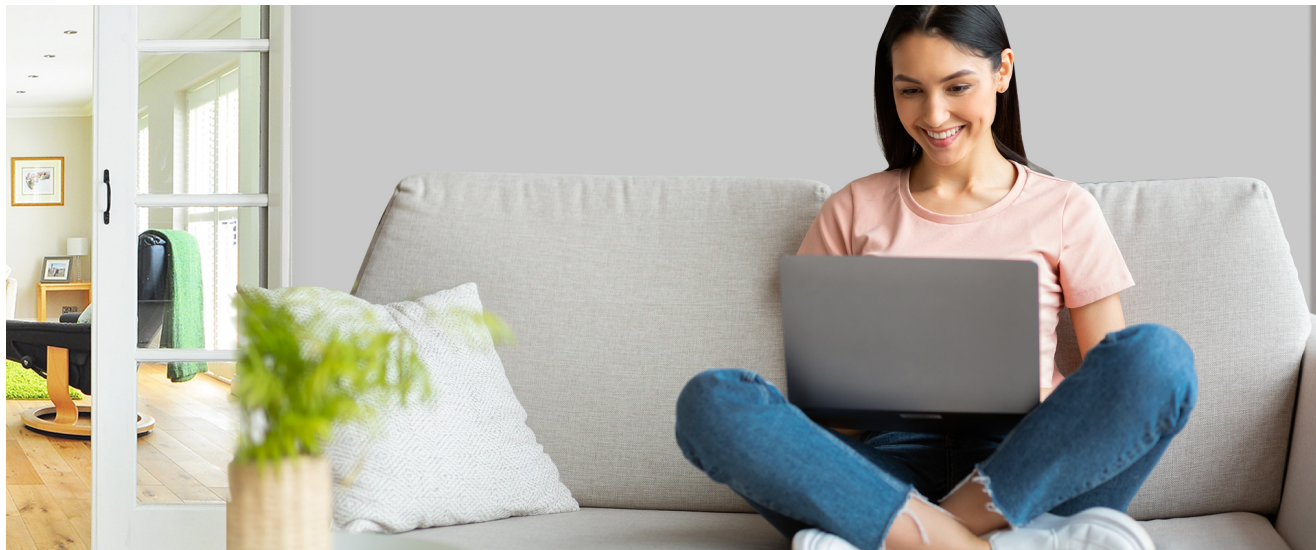
1. **POWER (W)** - THIS NUMBER REPRESENTS **THE MINIMUM VALUE** THAT THE NEW ADAPTER SHOULD HAVE. THERE IS NO PROBLEM WITH USING A **HIGHER-POWER** PRODUCT. THIS WILL REDUCE ITS LOAD AND, CONSEQUENTLY, ITS HEATING.
2. **CURRENT (A)** - JUST LIKE IN THE CASE OF POWER, THE VALUE ON THE NEW ADAPTER CAN BE **EQUAL TO OR HIGHER** THAN THE ONE STATED ON THE LAPTOP'S NAMEPLATE.
3. **VOLTAGE (V)** - THE NUMBER FOR THIS PARAMETER IS MORE STRICTLY REQUIRED. ONLY A **FLUCTUATION OF +/-**



## 0.5V IS ALLOWED.

THE LAST EQUALLY **IMPORTANT ISSUE** IS THE **PLUG**. WITHOUT IT, YOU WON'T GET FAR! THERE ARE NO EXCEPTIONS HERE, **IT'S NECESSARY FOR IT TO BE IDENTICAL TO THE ORIGINAL**. THE PROVIDED SIZE INDICATES THE OUTER DIAMETER AND THE INNER DIAMETER OF THE PIN. IF A COMPARISON BASED ON THE PRESENTED IMAGE IS NOT SUFFICIENT, AN **ACCURATE MEASUREMENT** WILL ULTIMATELY **CONFIRM YOUR CHOICE**.

## YOUR CHOICE MATTERS



**CHOOSING THE RIGHT POWER ADAPTER FOR YOUR LAPTOP MODEL IS CRUCIAL** BECAUSE IT AFFECTS SEVERAL KEY ASPECTS, SUCH AS:

- **LAPTOP RELIABILITY** - ENSURING STABLE AND UNINTERRUPTED POWER SUPPLY,
- **SAFETY** - MINIMIZING THE RISK OF LAPTOP OVERHEATING OR BATTERY DAMAGE,
- **PERFORMANCE** - PROVIDING ADEQUATE POWER FOR EFFICIENT LAPTOP OPERATION,
- **BATTERY LIFE** - ENSURING PROPER CHARGING AND DISCHARGING CYCLES FOR OPTIMAL BATTERY LIFESPAN,
- **ENERGY EFFICIENCY** - A HIGHLY ENERGY-EFFICIENT ADAPTER CAN HELP REDUCE ENERGY CONSUMPTION AND LAPTOP USAGE COSTS.

## SAFE POWER SUPPLY IN A UNIVERSAL EDITION



**INVEST IN SAFETY** - IT NEVER LOSES ITS VALUE. THE QOLTEC BRAND POWER ADAPTER, MADE FROM **TOP-QUALITY** MATERIALS, DESERVES YOUR ATTENTION. IT ENSURES THE EXPECTED **STABILITY** OF OPERATION THANKS TO SPECIAL PROTECTIONS:

- **AGAINST VOLTAGE SURGES**: GUARDS AGAINST TOO LOW OR TOO HIGH VOLTAGE,
- **AGAINST OVERLOADS**: SAFEGUARDS AGAINST OVERLOADING THE POWER LINE,
- **AGAINST SHORT CIRCUITS**: PROTECTS AGAINST SHORT CIRCUITS IN THE POWER CIRCUIT,
- **THERMAL PROTECTION**: SHIELDS AGAINST DAMAGE CAUSED BY OVERHEATING.

## TRUST CONFIRMED BY WARRANTY



DO YOU CARE ABOUT THE HIGH QUALITY OF THE PRODUCT YOU'RE PURCHASING? **OUR SOLUTIONS WILL MEET YOUR EXPECTATIONS.** EACH OF THE POWER ADAPTERS WE OFFER COMES WITH A 36-MONTH WARRANTY, EFFECTIVE FROM THE DATE OF PURCHASE.