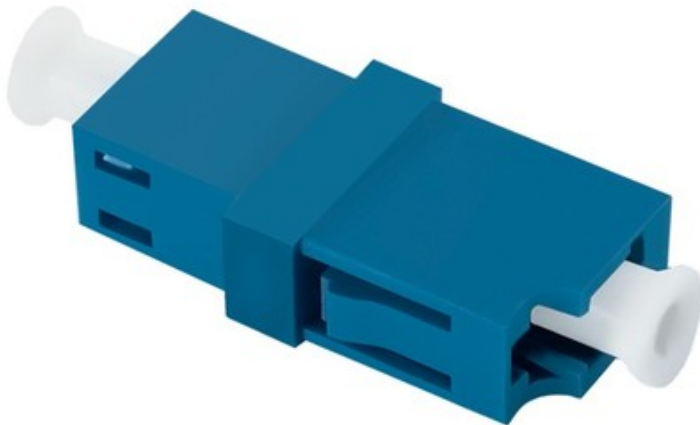


QOLTEC ADAPTER FIBER OPTIC LC/UPC | SIMPLEX | SINGLEMODE



PRICE: -,-- EUR

SHIPPING TIME: 24 HOURS

CATALOG NUMBER: 54131

EAN CODE: 5901878541310

ADDITIONAL INFORMATION: EASY INSTALLATION AND HANDLING. CAN BE USED IN HIGH SPEED FIBER OPTIC TRANSMISSION NETWORKS.

INSIDER TUBE: CERAMIKA

TYPE: SIMPLEX

PACKAGE: POLYBAG

TYPE CONNECTORS: LC/UPC

FIBER TYPE: JEDNOMODOWY

INSERTION LOSS: <0.3 DB

HOUSING: PC-AR

PRODUCENT: QOLTEC

GWARANCJA: 24 MIESIĄCE

SZEROKOŚĆ OPAKOWANIA [MM]: 15

GŁĘBOKOŚĆ / DŁUGOŚĆ OPAKOWANIA [MM]: 40

WYSOKOŚĆ OPAKOWANIA [MM]: 70

WAGA BRUTTO [KG]: 0.0020

WAGA NETTO [KG]: 0.0010

ITEM DESCRIPTION

PRODUCT DESCRIPTION

IT IS USED TO CONNECT TWO FIBER OPTIC CABLES WITH LC (LUCENT CONNECTOR) UPC (ULTRA POLISHED CONNECTOR) CONNECTORS. IT CAN BE USED WITH FIBRE OPTIC PATCHCORDS, WHICH SEND HIGH-SPEED DATA THROUGH A NETWORK. THE ADAPTER IS A PART OF OPTICAL PATH, IT GUARANTEES STABILITY OF TRANSMISSION PARAMETERS, AND HIGH QUALITY CERAMIC FERRULE, THAT IS POLISHED AT AN 8-DEGREE ANGLE, ASSURES LOWER RETURN LOSS. OPENABLE CLIPS ENSURE EASY ASSEMBLY AND DISASSEMBLY. CABLE SIMPLEX WHICH HAS APPLICATION IN THIS ADAPTER, IS USED IN CABLE DUCTS, CUBICLES AND PIPES WITH LOW MECHANICAL PRESSURE.

SCHEME SINGLEMODE FIBER

SINGLEMODE FIBER HAS A SMALL CORE DIAMETER THAT SUPPORTS ONLY ONE MODE OF LIGHT. SIGNAL IS TRAVELING IN A SINGLE LIGHT BEAM WITH CLOSE TO NONE REFLECTION. LOW REFLECTION RATIO MEANS LOWER DISPERSION.

LC/UPC CONNECTORS

THE ADVANTAGE OF LC CONNECTOR IS LITTLE DIMENSIONS SO IT ALLOWS FOR VERY HIGH PACKING DENSITY AND MAKE IT ATTRACTIVE FOR USE IN DATA CENTERS AND CENTRAL OFFICES. THE CONNECTOR IS FITTED WITH A LOCKING LATCH RETENTION MECHANISM, WHICH PROTECTS CONNECTOR FROM ACCIDENTAL PULLING OFF. LC CONNECTOR IS ALSO USED IN LAN, WAN AND LTDD NETWORKS, ON RAILWAY, TELECOMMUNICATIONS NETWORK, CABLE TELEVISION AND

