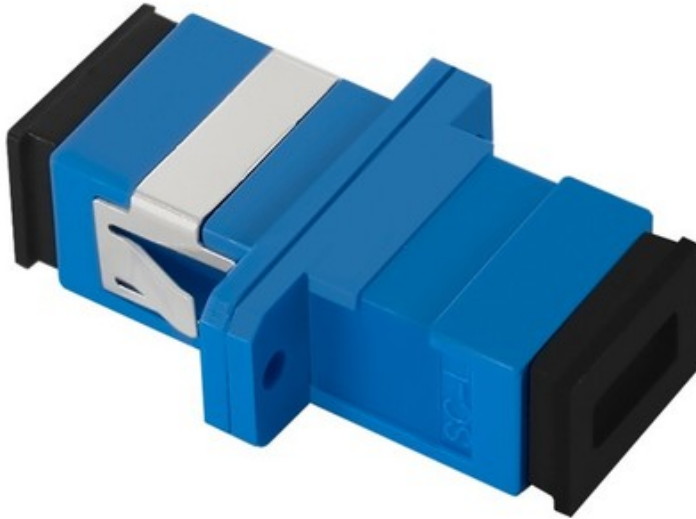


QOLTEC ADAPTER FIBER OPTIC SC/UPC | SIMPLEX | SINGLEMODE



PRICE: --,-- EUR

SHIPPING TIME: 24 HOURS

CATALOG NUMBER: 54139

EAN CODE: 5901878541396

ADDITIONAL INFORMATION: EASY INSTALLATION AND HANDLING. CAN BE USED IN HIGH SPEED FIBER OPTIC TRANSMISSION NETWORKS.

INSIDER TUBE: CERAMIKA

TYPE: SIMPLEX

PACKAGE: POLYBAG

TYPE CONNECTORS: SC/UPC

FIBER TYPE: JEDNOMODOWY

INSERTION LOSS: <0.3 DB

HOUSING: ABS-AR

PRODUCENT: QOLTEC

GWARANCJA: 24 MIESIĄCE

WAGA BRUTTO [KG]: 0.0040

WAGA NETTO [KG]: 0.0030

ITEM DESCRIPTION

PRODUCT DESCRIPTION

IT IS USED TO CONNECT TWO FIBER OPTIC CABLES WITH SC (SQUARE CONNECTOR) UPC (ULTRA POLISHED CONNECTOR) CONNECTORS. IT CAN BE USED WITH FIBRE OPTIC PATCHCORDS, WHICH SEND HIGH-SPEED DATA THROUGH A NETWORK. THE ADAPTER IS A PART OF OPTICAL PATH, IT GUARANTEES STABILITY OF TRANSMISSION PARAMETERS, HIGH QUALITY MATERIALS AND OPENABLE CLIPS ENSURE EASY ASSEMBLY AND DISASSEMBLY. CABLE SIMPLEX WHICH HAS APPLICATION IN THIS ADAPTER, IS USED IN CABLE DUCTS, CUBICLES AND PIPES WITH LOW MECHANICAL PRESSURE.

SCHEME SINGLEMODE FIBER

SINGLEMODE FIBER HAS A SMALL CORE DIAMETER THAT SUPPORTS ONLY ONE MODE OF LIGHT. SIGNAL IS TRAVELING IN A SINGLE LIGHT BEAM WITH CLOSE TO NONE REFLECTION. LOW REFLECTION RATIO MEANS LOWER DISPERSION.

SC/UPC CONNECTORS

SC CONNECTORS ARE MOSTLY USED IN TELECOMMUNICATION. IT IS ALSO USED IN ACTIVE EQUIPMENT SUCH AS VIDEO CONVERTERS AND MEDIA. IT ENSURES EASY, QUICK CONNECTION AND IT IS RESISTANT FOR CONNECTION DEFECTS. THE SHAPE OF CONNECTOR ASSURES EASY AND STABLE ASSEMBLY. BESIDE USAGE IN TELECOMMUNICATION, SC CONNECTOR IS ALSO USED IN LAN, WAN AND CATV NETWORKS, MEASURING TECHNIQUES AND ON THE RAILWAY.