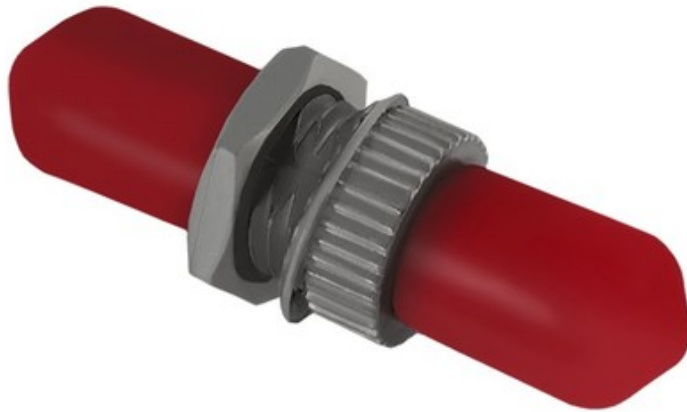


QOLTEC ADAPTER FIBER OPTIC ST/UPC | SIMPLEX | MULTIMODE



PRICE: --,-- EUR

SHIPPING TIME: 24 HOURS

CATALOG NUMBER: 54144

EAN CODE: 5901878541440

ADDITIONAL INFORMATION: EASY INSTALLATION AND HANDLING. CAN BE USED IN HIGH SPEED FIBER OPTIC TRANSMISSION NETWORKS.

TYPE: SIMPLEX

PACKAGE: POLYBAG

TYPE CONNECTORS: ST/UPC

FIBER TYPE: WIELOMODOWY

PRODUCENT: QOLTEC

GWARANCJA: 24 MIESIĄCE

SZEROKOŚĆ OPAKOWANIA [MM]: 15

GŁĘBOKOŚĆ / DŁUGOŚĆ OPAKOWANIA [MM]: 40

WYSOKOŚĆ OPAKOWANIA [MM]: 70

WAGA BRUTTO [KG]: 0.0070

WAGA NETTO [KG]: 0.0060

ITEM DESCRIPTION

PRODUCT DESCRIPTION

IT IS USED TO CONNECT TWO FIBER OPTIC CABLES WITH ST (STRAIGHT TIP CONNECTOR) UPC (ULTRA POLISHED CONNECTOR) CONNECTORS. IT CAN BE USED WITH FIBER OPTIC PATCHCORDS, WHICH SEND HIGH-SPEED DATA THROUGH A NETWORK. THE ADAPTER IS A PART OF OPTICAL PATH, IT GUARANTEES STABILITY OF TRANSMISSION PARAMETERS, AND HIGH QUALITY MATERIALS AND OPENABLE CLIPS ENSURE EASY ASSEMBLY AND DISASSEMBLY. CABLE SIMPLEX, WHICH HAVE APPLICATION IN THIS ADAPTER, IS USED IN CABLE DUCTS, CUBICLES AND PIPES WITH LOW MECHANICAL PRESSURE.

SCHEME MULTIMODE FIBER

SIGNAL IN MULTIMODE FIBER OPTIC PATCHCORD TRAVELS IN MULTIPLE BEAMS FROM THE LED OR LASER AND IT TRAVELS IN DIFFERENT ANGLES. MULTIMODE FIBER EXPERIENCE GREATER ATTENUATION, WHICH MAKE THEM BETTER OPTION FOR SHORT DISTANCES, THAN FOR LONG ONES.

ST/UPC CONNECTORS

ST CONNECTOR IS MADE OF ZINC ALLOY, NICKEL AND THERMOPLASTIC RUBBER. THOSE MATERIALS ENSURES DURABILITY AND SOLIDITY OF CONNECTED OPTIC FIBERS. ADAPTER IS MADE OF POLYMER FIBRE WITH ZINC ELEMENTS. ST CONNECTORS HAVE WIDE RANGE OF USAGE: IN LAN, WAN AND CATV NETWORKS, IN SINGLEMODE AND MULTIMODE OPTIC FIBERS, MEASURING TECHNIQUES AND ON THE RAILWAY.